



**WAVELET**  
**B E A M**

---

**VIDEO CLEANUP  
&  
TRANSCODE**

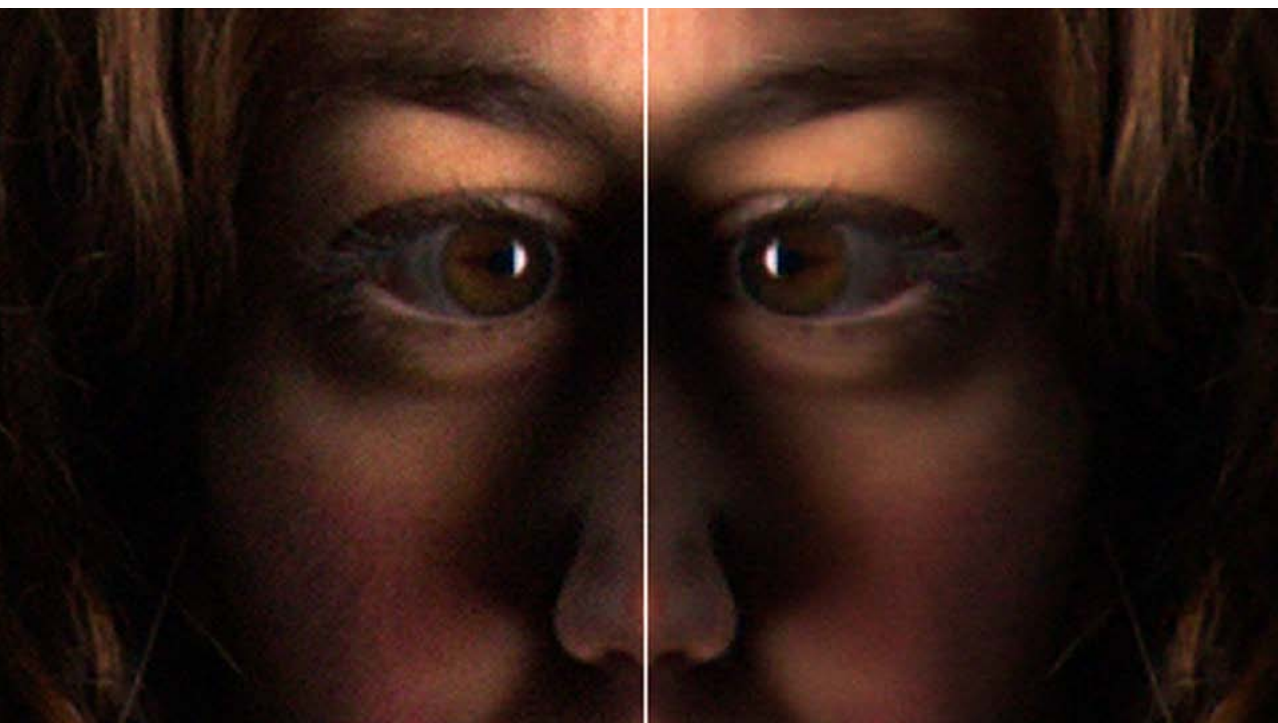


# VIDEO CLEANUP & T R A N S C O D E

Wavelet Beam's new transcoding product „VIDEO CLEANUP & TRANSCODE“ integrates cleanup and de-noising functionalities for ultra-low bandwidth encoding. Common container formats and the newest encoders like H265/HEVC are supported. „VIDEO CLEANUP & TRANSCODE“ migrates VOD archives and provides huge cost savings for CDN and backbone distribution. Also OTT provider can benefit from smoother streaming. Our product captivates by high speed transcoding into adaptive formats for digital delivery, such as DivX Plus Streaming™, Apple HLS or DASH-264 and DASH-265, including playlist generation for HLS and manifest file creation for DASH.

## SUPPORTED CODECS

- > HEVC/H.265
- > H.264 / AVC
- > H.264/AVC for Intel Quick Sync Video
- > MPEG-1 and MPEG-2
- > VC-1
- > MPEG-4 Part 2
- > DVCPRO 25/50/HD
- > JPEG2000
- > DivX / DivX Plus / DivX Plus Streaming (DPS)
- > Dolby Digital Professional
- > Dolby Digital Plus Pro



ARRI ALEXA DIGITAL CAMERA FOOTAGE (200% ZOOM)



# VIDEO CLEANUP & T R A N S C O D E

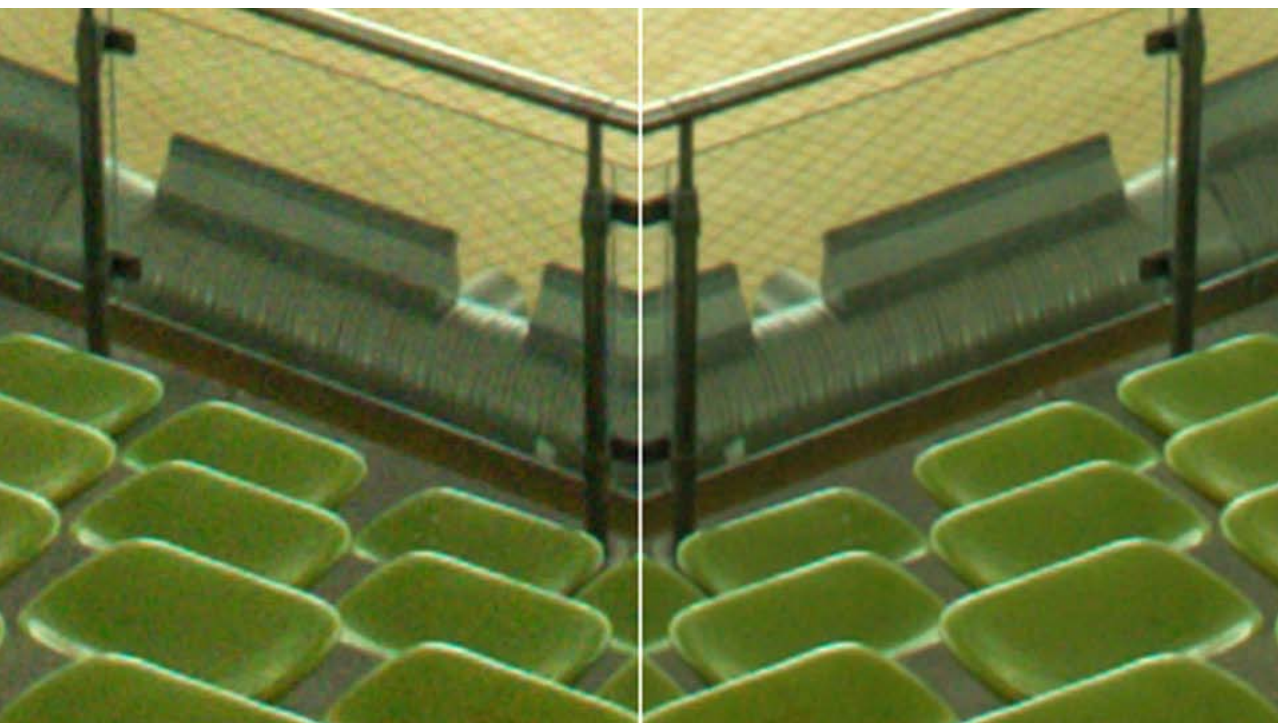
---

## „VIDEO CLEANUP & TRANSCODE“

Combines video bandwidth reduction and video quality enhancement in one process

- > Cost savings and smoother streaming
- > Immediate Return-On-Investment
- > Enabled HD on mobiles and low bandwidth connected devices
- > Ensures more effective DVB statistical multiplexing
- > Simple integration via watch folder functionally and FIMS support
- > Standard video and container formats including H264 and the new H265
- > Fully automatic processing
- > High speed GPU processing

ANY VIDEO IN ANY RESOLUTION AND BANDWIDTH  
IN THE BEST POSSIBLE QUALITY



ARRI ALEXA DIGITAL CAMERA FOOTAGE (400% ZOOM)



Tel. +49 5258 9777677

Fax +49 5258 9777709

Mobile +49 170 1026784

[dirk.hildebrandt@waveletbeam.com](mailto:dirk.hildebrandt@waveletbeam.com)

[www.waveletbeam.com](http://www.waveletbeam.com)

Dirk Hildebrandt  
Fliederweg 7  
D-33154 Salzkotten